

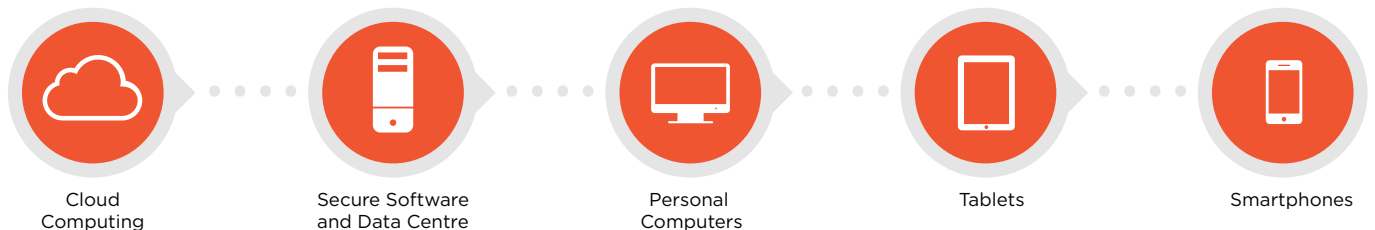
Planning

AdvantEDGE Planning allows the user to keep track of all the planning applications dealt with by the council. It is specifically designed to mimic the process that local councils use for planning applications.

Main Features

- Record comments, decision notices, appeals and amendments
- Link each planning application with web link to the District/County plan
- Locate each planning application on Google maps and what3words
- Reference plans by application number, District Council Reference, and other user defined references
- Categorise plans using your own categories e.g. Extension, Listed Building, New Build
- Retrieve applications within a particular ward
- Search by reference fields or any word in the text for the application, comment, decision, or appeal
- Keep track of section 106 obligations for relevant applications
- Comprehensive reports, e.g. applications to be commented on, decisions reported, individual plan details etc
- All reports are easily previewed, printed, exported to PDF or Word, and emailed directly to recipients
- Produce HTML versions of key reports to upload to council website
- Produce District Council return
- Create your own letters for mail merge
- Best Value statistical analysis report

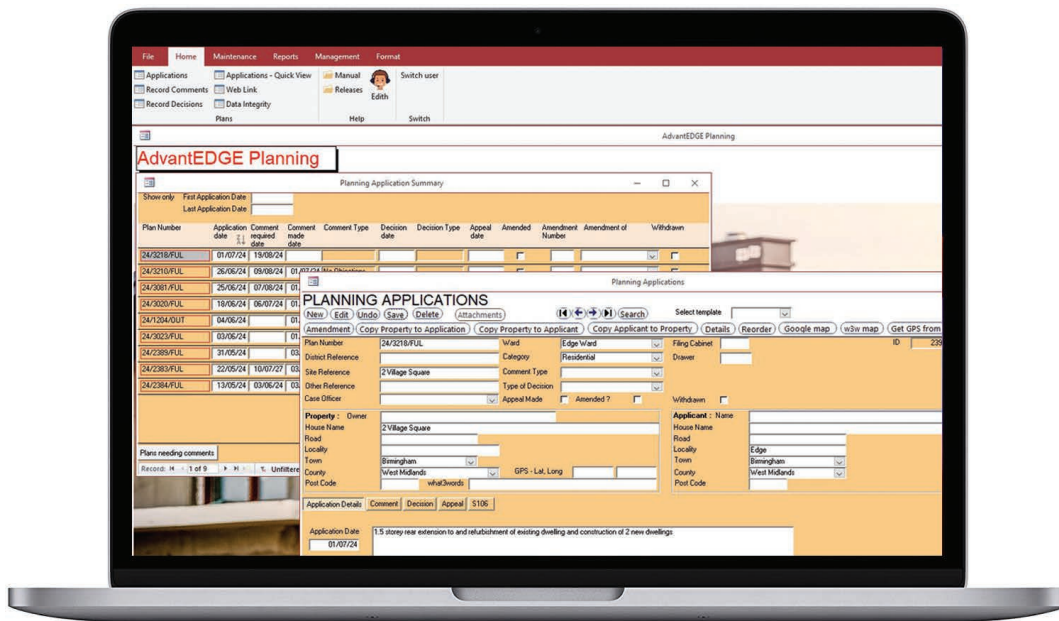
Online Hosting



Planning Pricing

Band	Plans (per annum)	5 Year Contract (annual price)
1	120	£183
2	300	£207
3	480	£278
4	700	£352
5	Unlimited	£405

3 year, 1 year and monthly contracts also available.
All prices correct as of 1st January 2025, and exclude VAT.



AdvantEDGE is **Software as a Service (SaaS)**. The software and data are held in the cloud on UK servers. Access is available from Windows, Apple or Android devices with an internet connection. You are always running on the latest version of the software and EDGE automatically backs up your data **every hour** at no extra cost to www.datto.com. **Support** is included in the price, and is available by phone, email and online helpdesk through which software enhancements can also be requested.

No Capital Expenditure. Payment for the use of **AdvantEDGE** is via a leased term contract; monthly, 1, 3 or 5 years. Pricing per concurrent user includes unlimited AdvantEDGE user logons. Each concurrent user account enables one AdvantEDGE user to connect at a time, and multi factor authentication (MFA) is included. Additional, concurrent users are £138 per annum and can use all AdvantEDGE modules subscribed to. **Escrow** is included to provide service for a 60 day period and the ability to download data with a 12 month software licence. Other escrow options available.

We offer online training by the hour, which is particularly useful for getting you started, for new members of staff and refresher training.